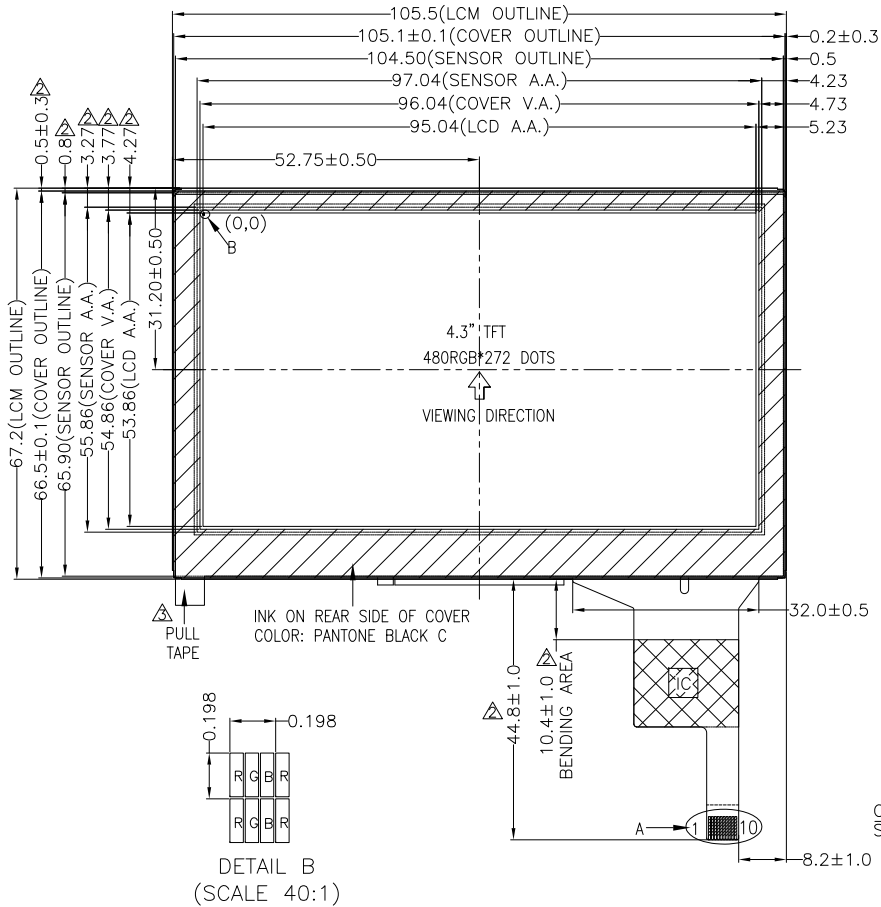
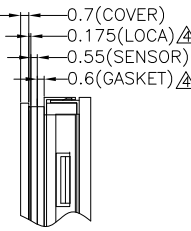
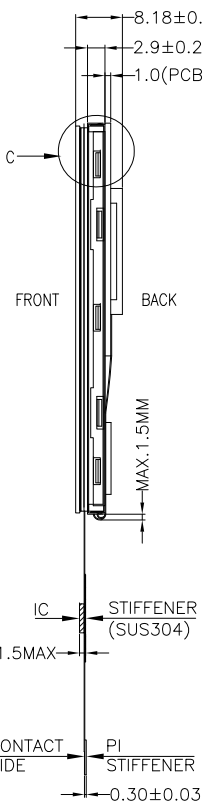


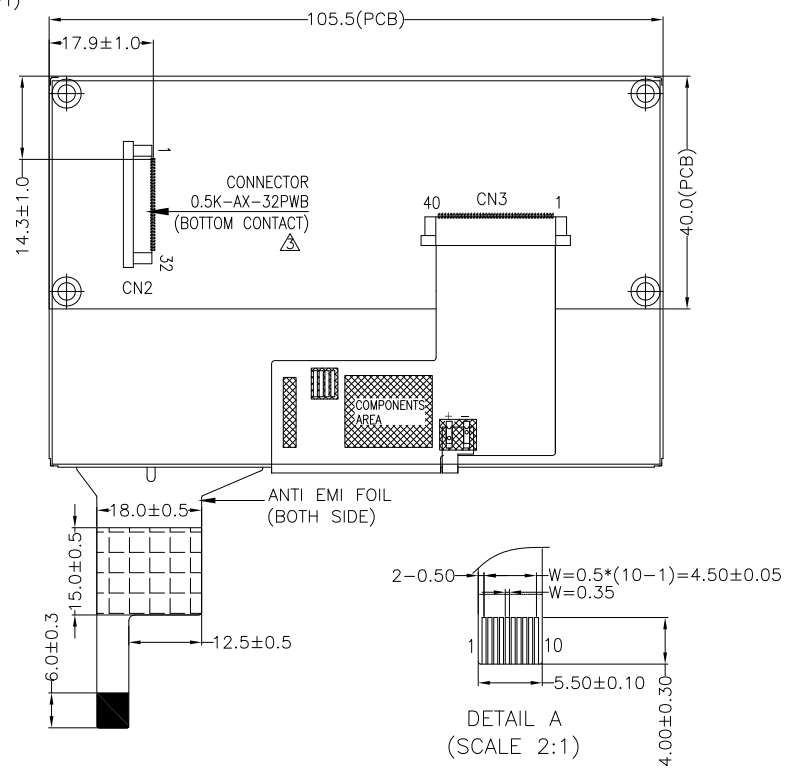
NO MECHANICAL HOUSING TO HOLD THE TFT AND THE TOUCH PANEL ON THIS PRODUCT, SO THE END UNIT'S MECHANICAL DESIGN MUST INCLUDE A HOUSING FOR PREVENTING THE SEPARATION OF THE TFT AND THE TOUCH PANEL.



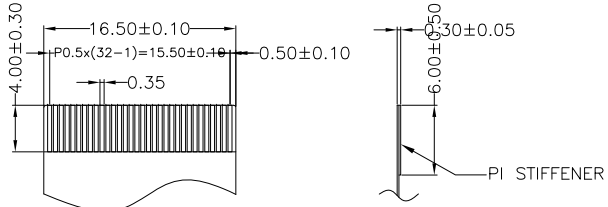
DETAIL B (SCALE 40:1)



DETAIL C (SCALE 2:1)



DETAIL A (SCALE 2:1)



△ CN2 CONNECTOR MATED FPC/FFC STYLE (SCALE 2:1)

PIN ASSIGNMENT FOR CN2	
PIN	SYMBOL
1	GND
2	VCC
3	BL_E
4	RS
5	/WR
6	/RD
7	DB0
8	DB1
9	DB2
10	DB3
11	DB4
12	DB5
13	DB6
14	DB7
15	DB8
16	DB9
17	DB10
18	DB11
19	DB12
20	DB13
21	DB14
22	DB15
23	VCC
24	GND
25	/CS
26	/RST
27	TE
28	NC
29	NC
30	NC
31	NC
32	DISP

PIN ASSIGNMENT FOR CTP	
PIN	SYMBOL
1	VSS
2	VDD
3	SCL
4	NC
5	SDA
6	NC
7	/RST
8	NC
9	/INT
10	VSS

- NOTES FOR TFT:
1. DISPLAY TYPE: TFT, TRANSMISSIVE, NORMALLY WHITE
 2. OPERATING VOLTAGE: VDD=3.3V (TYP.)
 3. VIEWING DIRECTION: 6:00 O'CLOCK
 4. LCD CONTROLLER: SSD1963, 8 / 16-BIT 8080 MPU
 5. LED BACKLIGHT: 10-CHIP WHITE LED BUILT-IN BACKLIGHT DRIVER
 6. TOP POLARIZER SURFACE TREATMENT: ANTI-GLARE
 7. INTERFACE: 8 / 16-BIT 8080 MPU

- NOTES FOR CTP:
1. 4.3 INCH PROJECTIVE CAPACITIVE TOUCH PANEL
 2. COVER GLASS + SENSOR GLASS + FPCA
 3. OPERATING VOLTAGE: VCC=IOVCC=3.3V
 4. DRIVER IC: FT5446-P03 △
 5. INTERFACE: I²C
 6. RESOLUTION: 480*272
 7. MULTI FINGER: UP TO 5
 8. HARDNESS OF COVER SURFACE: 7H
 9. FIRMWARE FILE: MIO430CRP-C11(FT5446-P03)_FIRMWARE_V09_20200423_ALL.BIN △

- NOTES FOR OTHERS:
1. OPERATING TEMP.: -20°C ~ 70°C
 2. STORAGE TEMP.: -30°C ~ 80°C
 3. SURFACE LUMINANCE: 380 CD/M² (TYP.) (WITH CTP)
 4. ONLY THE SINGLE LAYER AREA ON FPC IS BENDABLE AND THE MINIMUM BEND RADIUS IS 1.5MM
 5. GENERAL TOLERANCE: ±0.3MM
 6. ROHS COMPLIANT

04	UPDATE THE DRIVER IC OF CTP FROM FT5446Q0S TO FT5446-P03. ADD FIRMWARE VERSION. ADD CN2 CONNECTOR MATED FPC/FFC STYLE. CHANGE THE THICKNESS OF GASKET, LOCA AND TOTAL. MODIFY THE DEFINITION OF PIN.	RITA	2023.02.02	MULTI-INNO TECHNOLOGY CO., LTD.	DRAWN BY: VICTOR 2016.08.12 CHECKED BY: APPROVED BY:	MODULE P/N: MIO430L1T-1CP1 DESCRIPTION: TFT + CTP + PCBA MODULE
03	CORRECT THE P/N OF CONNECTOR AND ADD PULL TAPE.	RITA	2017.01.04			
02	CORRECT THE ASSEMBLY DIMENSIONS FOR LCD A.A., COVER V.A., SENSOR O.D., COVER O.D., FPC LENGTH, RESPECTING TO TFT O.D..	VICTOR	2016.08.22			
01	FIRST ISSUE	VICTOR	2016.08.12			
VER.	REVISED DESCRIPTION	REVISER	DATE			